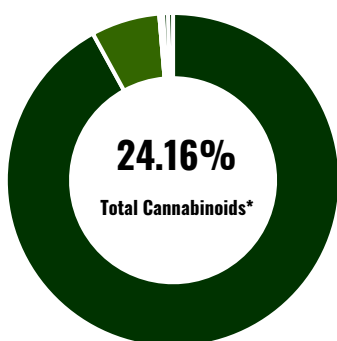
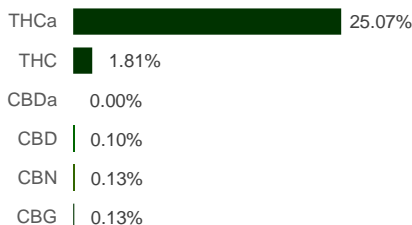


<b>Sample ID:</b> Chocolate Mint	<b>Report No.:</b> QC-FFG-202402017
<b>Type:</b> Flower	<b>Date of Receiving:</b> 9 February 2024 @ 10:00 A.M.
<b>Test:</b> Potency	<b>Date of Testing:</b> 9 February 2024
<b>Method:</b> In House Method by HPLC	<b>Date Issue:</b> 13 February 2024

**CANNABINOID PROFILE**



Compound	LOQ (%)	Result (%)	Result (mg/g)
Delta 9-Tetrahydrocannabinolic Acid (THCA)	0.32	25.07	250.69
Delta 9-Tetrahydrocannabinol (Delta 9 THC)	0.16	1.81	18.06
Cannabidiolic Acid (CBDA)	0.26	0.00	0.00
Cannabidiol (CBD)	0.15	0.10	1.04
Cannabinol (CBN)	0.20	0.13	1.30
Cannabigerol (CBG)	0.16	0.13	1.32



<b>Total Cannabinoids</b>	<b>24.16</b>	<b>241.57</b>
Total Potential THC**	23.79	237.91
Total Potential CBD**	0.10	1.04
Total CBN	0.13	1.30
Total CBG	0.13	1.32

% = % (w/w) = Percent (Weight of Analyte / Weight of Product)

\* Total Cannabinoids result reflects the absolute sum of all cannabinoids detected.

\*\* Total Potential THC/CBD is calculated using the following formulas to take into account the loss of carboxyl group during decarboxylation step

Total THC = THC + (THCa\*(0.877)) and Total CBD = CBD + (CBDa\*(0.877))

**Noted**

**Final Approval**

	Pacharaphan Songjanthuek QC Officer		Nattaya Mekjirawat QC Manager
--	--	--	----------------------------------

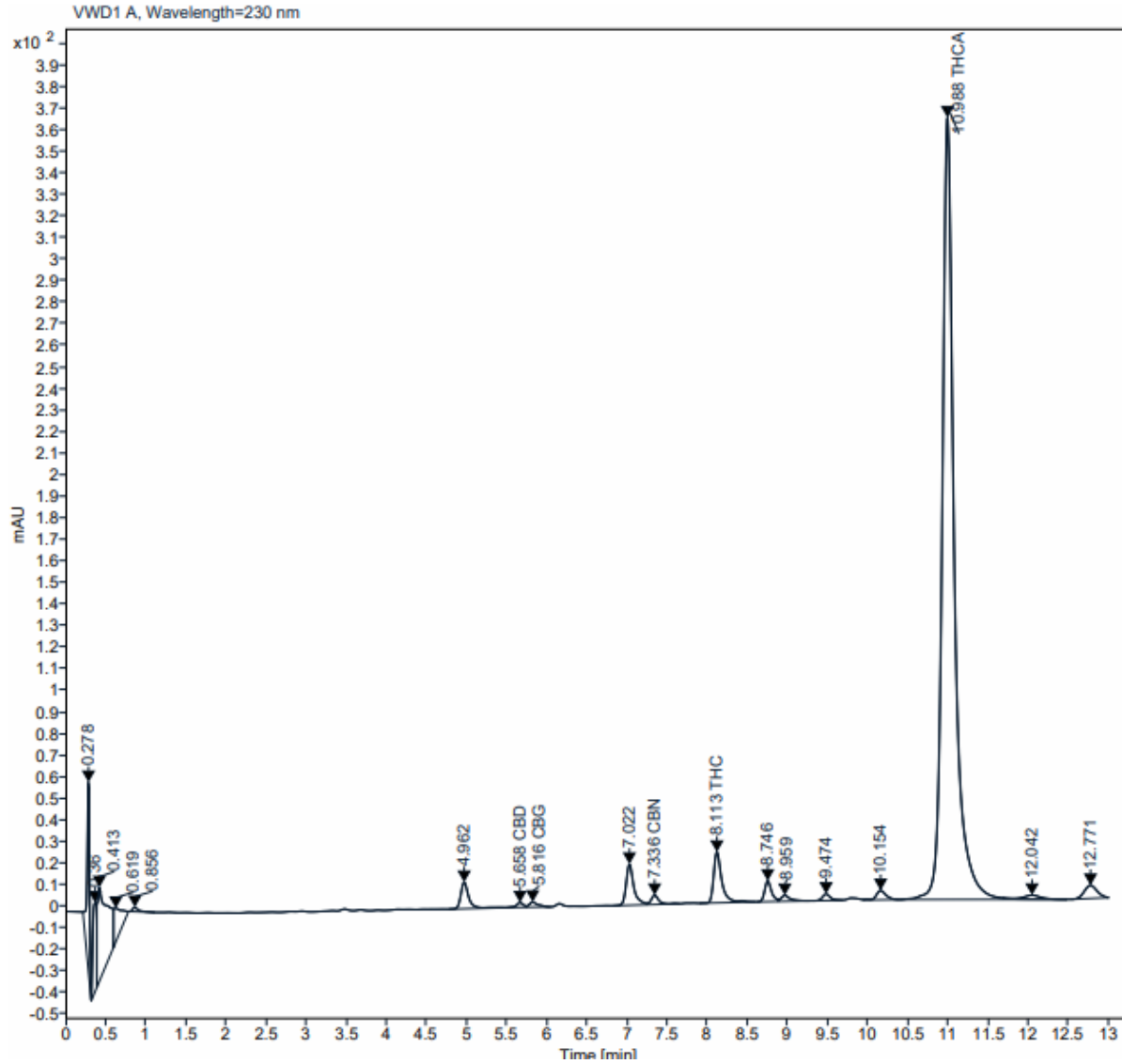
PREPARED BY

APPROVED BY



**Sample Name:** Butter Milk  
**Instrument:** LC1220 INFII  
**Analysis Method:** Cannabis6.M

**Concentration:** 1000 ppm  
**Injection:** 9 February 2024 @ 21:01 P.M.  
**Injection Volume:** 5.00



**Percent report based on Area**

Name	RT [min]	Area	Height	RF	Amount [ng/ul]
CBD	5.658	12.8518	2.1520	0.08105	1.042
CBG	5.816	17.7018	2.3234	0.07439	1.317
CBN	7.336	28.5560	4.2816	0.04550	1.299
THC	8.113	165.2191	23.4675	0.10929	18.056
THCA	10.988	3758.6538	362.3266	0.06670	250.692