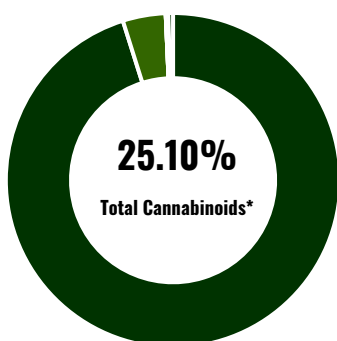
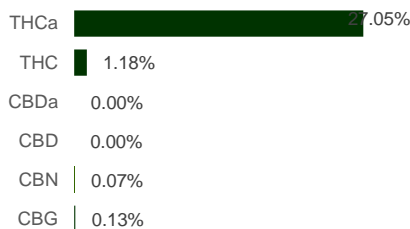


<b>Sample ID:</b>	SCK	<b>Report No.:</b>	QC-FFG-202402014
<b>Type:</b>	Flower	<b>Date of Receiving:</b>	9 February 2024 @ 10:00 A.M.
<b>Test:</b>	Potency	<b>Date of Testing:</b>	9 February 2024
<b>Method:</b>	In House Method by HPLC	<b>Date Issue:</b>	13 February 2024

**CANNABINOID PROFILE**



Compound	LOQ (%)	Result (%)	Result (mg/g)
Delta 9-Tetrahydrocannabinolic Acid (THCA)	0.32	27.05	270.48
Delta 9-Tetrahydrocannabinol (Delta 9 THC)	0.16	1.18	11.83
Cannabidiolic Acid (CBDA)	0.26	0.00	0.00
Cannabidiol (CBD)	0.15	0.00	0.00
Cannabinol (CBN)	0.20	0.07	0.73
Cannabigerol (CBG)	0.16	0.13	1.26



<b>Total Cannabinoids</b>	<b>25.10</b>	<b>251.03</b>
Total Potential THC**	24.90	249.04
Total Potential CBD**	0.00	0.00
Total CBN	0.07	0.73
Total CBG	0.13	1.26

% = % (w/w) = Percent (Weight of Analyte / Weight of Product)

\* Total Cannabinoids result reflects the absolute sum of all cannabinoids detected.

\*\* Total Potential THC/CBD is calculated using the following formulas to take into account the loss of carboxyl group during decarboxylation step

Total THC = THC + (THCa\*(0.877)) and Total CBD = CBD + (CBDa\*(0.877))

**Noted**

**Final Approval**

	Pacharaphan Songjanthuek QC Officer		Nattaya Mekjirawat QC Manager
--	--	--	----------------------------------

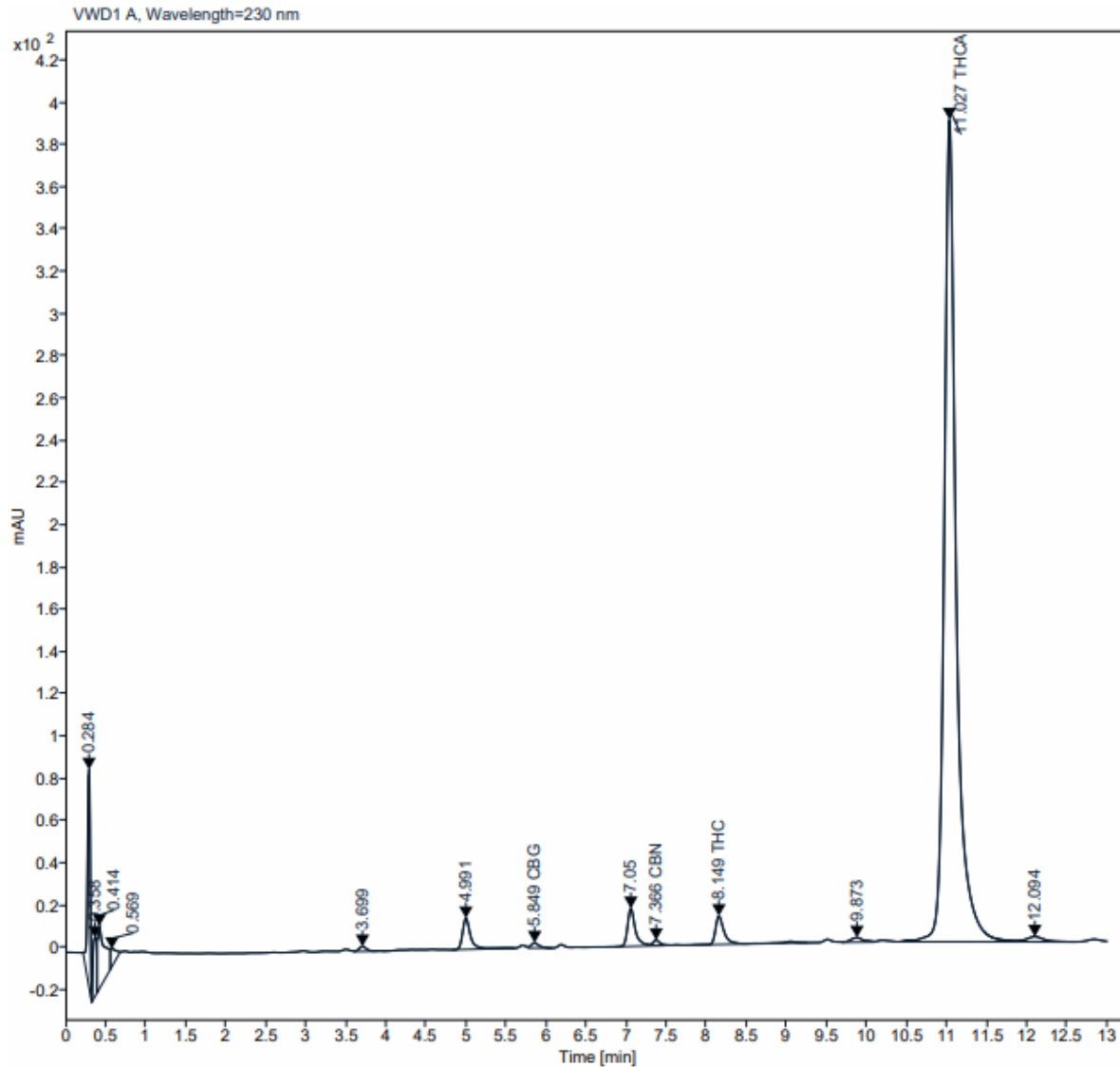
PREPARED BY

APPROVED BY



**Sample Name:** Medicana Flower log  
**Instrument:** LC1220 INFII  
**Analysis Method:** Cannabis6.M

**Concentration:** 1000 ppm  
**Injection:** 9 February 2024 @ 1:31 A.M.  
**Injection Volume:** 5.00



**Percent report based on Area**

Name	RT [min]	Area	Height	RF	Amount [ng/ul]
CBG	5.849	17.1593	2.5086	0.07362	1.263
CBN	7.366	14.8450	2.4880	0.04903	0.728
THC	8.149	109.1591	13.4530	0.10837	11.830
THCA	11.027	4055.5029	389.1763	0.06669	270.481