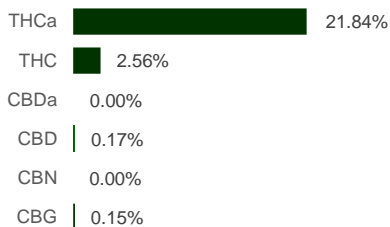
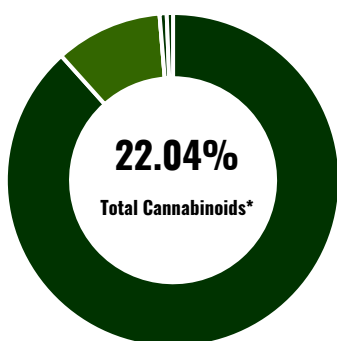


Sample ID: 2C	Report No.: QC-FFG-202402008
Type: Flower	Date of Receiving: 9 February 2024 @ 10:00 A.M.
Test: Potency	Date of Testing: 9 February 2024
Method: In House Method by HPLC	Date Issue: 13 February 2024

CANNABINOID PROFILE



Compound	LOQ (%)	Result (%)	Result (mg/g)
Delta 9-Tetrahydrocannabinolic Acid (THCA)	0.32	21.84	218.39
Delta 9-Tetrahydrocannabinol (Delta 9 THC)	0.16	2.56	25.64
Cannabidiolic Acid (CBDA)	0.26	0.00	0.00
Cannabidiol (CBD)	0.15	0.17	1.74
Cannabinol (CBN)	0.20	0.00	0.00
Cannabigerol (CBG)	0.16	0.15	1.54

Total Cannabinoids	22.04	220.43
Total Potential THC**	21.72	217.16
Total Potential CBD**	0.17	1.74
Total CBN	0.00	0.00
Total CBG	0.15	1.54

% = % (w/w) = Percent (Weight of Analyte / Weight of Product)

* Total Cannabinoids result reflects the absolute sum of all cannabinoids detected.

** Total Potential THC/CBD is calculated using the following formulas to take into account the loss of carboxyl group during decarboxylation step

Total THC = THC + (THCa*(0.877)) and Total CBD = CBD + (CBDa*(0.877))

Noted

Final Approval

 Pacharaphan	Pacharaphan Songjanthuek QC Officer	 Nattaya M.	Nattaya Mekjirawat QC Manager
--	--	--	----------------------------------

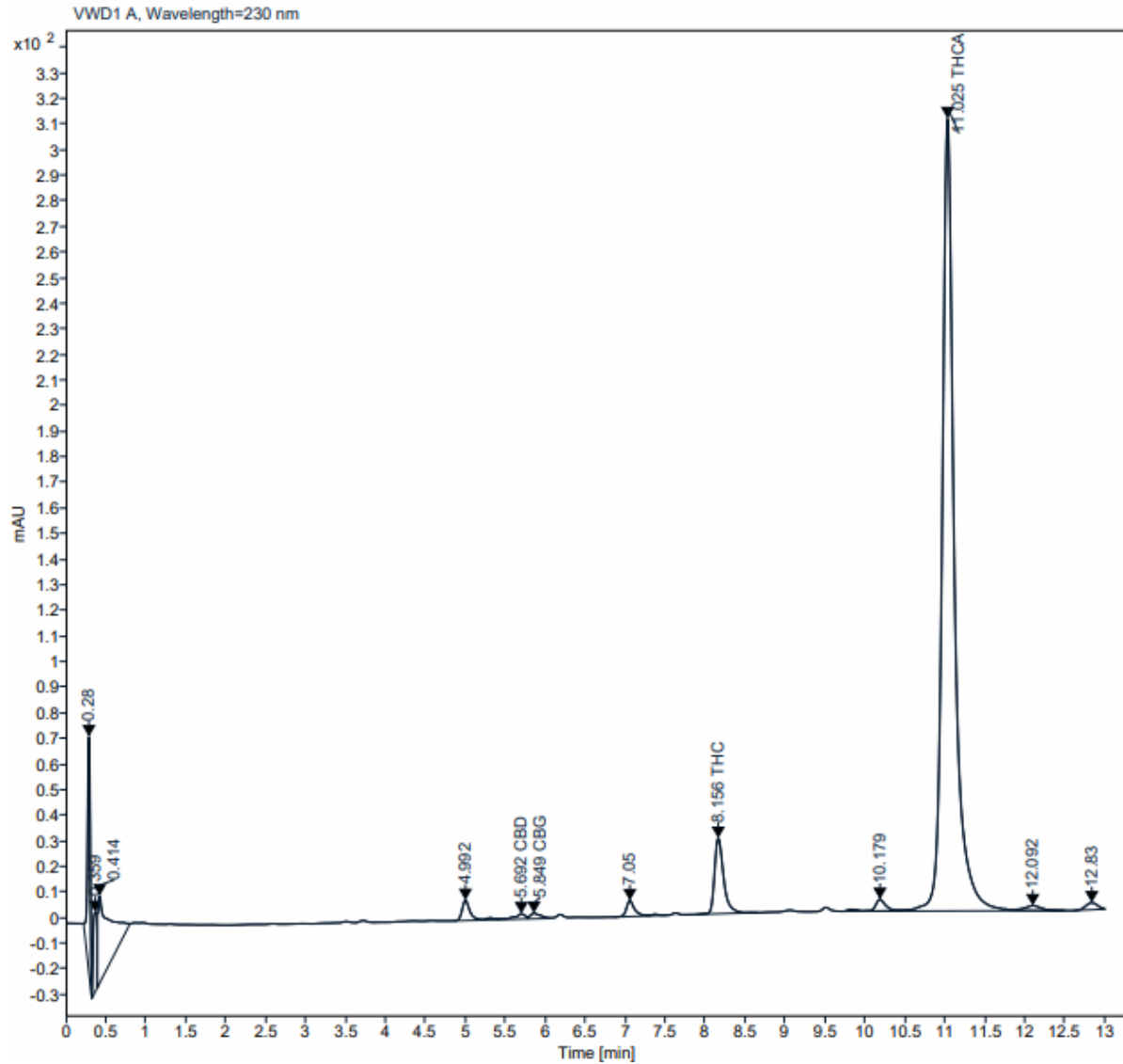
PREPARED BY

APPROVED BY



Sample Name: Medicana Flower 2C
Instrument: LC1220 INFII
Analysis Method: Cannabis6.M

Concentration: 1000 ppm
Injection: 9 February 2024 @ 23:55 P.M.
Injection Volume: 5.00



Percent report based on Area

Name	RT [min]	Area	Height	RF	Amount [ng/ul]
CBD	5.692	20.1163	2.0790	0.08630	1.736
CBG	5.849	19.9394	2.1415	0.07710	1.537
THC	8.156	233.4560	29.4429	0.10981	25.635
THCA	11.025	3274.0085	309.5116	0.06670	218.385